

2014 eMeasure Flows  
Cover Page

**For eligible professionals reporting EHR clinical quality measures for Meaningful Use (MU) only (Option #1) in 2014, the following must be included in the submitted file(s):**

- 1 – Rendering NPI and TIN on QRDA Category III files
- 2 – Payers for all eligible patients identified on QRDA Category III files
- 3 – All of the identifiers for the eMeasures the eligible professional or group practice intends to report must be included in the appropriate fields of the QRDA Category III files even if they do not have any eligible patients for those eMeasures
- 4 – Performance rate(s) (or a measure observation value) must be included in the QRDA Category III file for every eMeasure the eligible professional intended to report according to the performance rate (or measure observation) algorithms provided in each of the flows
- 5 – For every patient evaluated for the eMeasures also identify payer, race, ethnicity and sex.

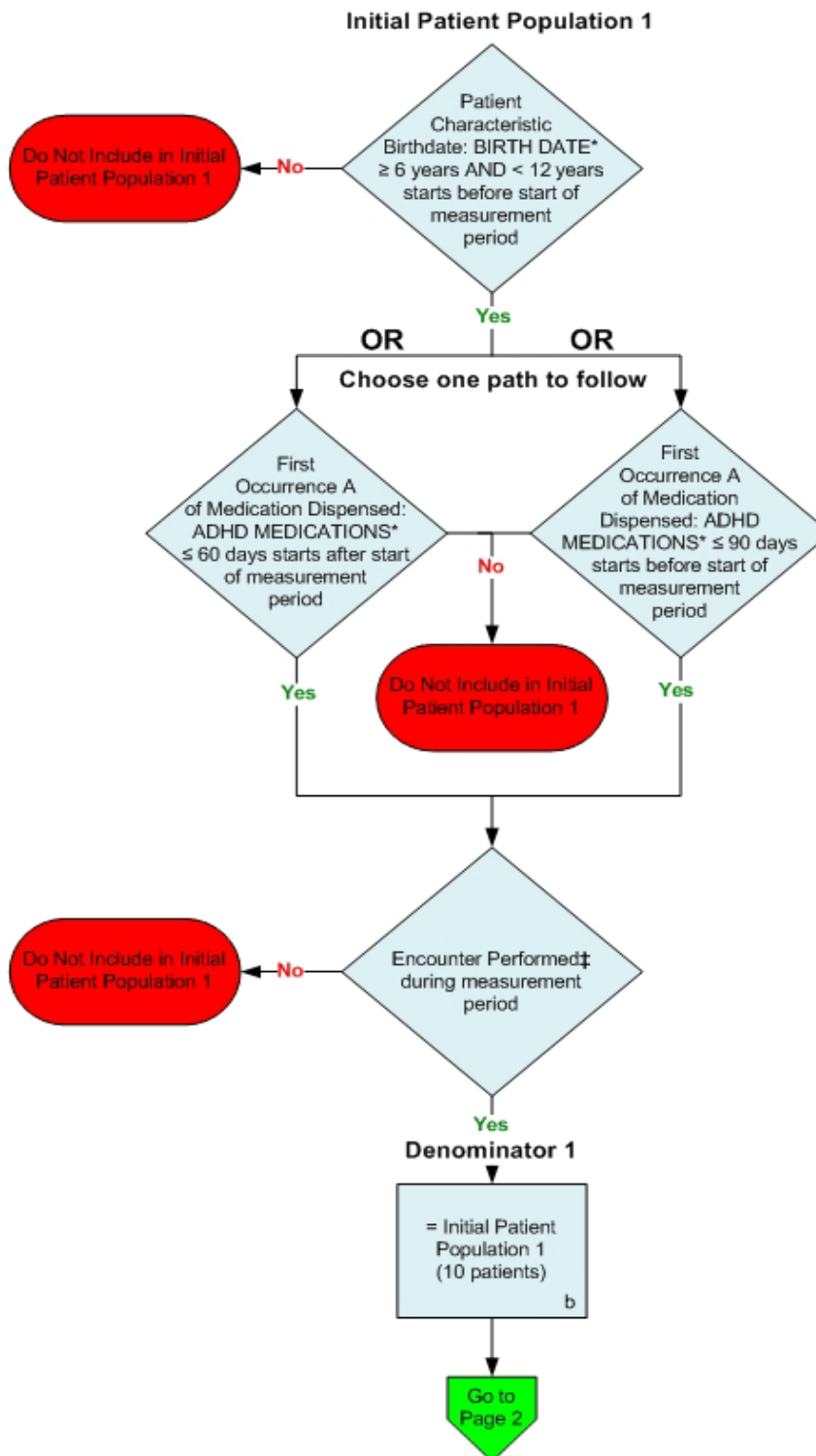
**For eligible professionals and group practices reporting EHR clinical quality measures for Meaningful Use (MU) and the Physician Quality Reporting System (PQRS) (Option #2) in 2014, the following must be included in the submitted file(s):**

- 1 – Rendering NPI and TIN on the appropriate fields of the QRDA Category I or QRDA Category III files for eligible professionals reporting as *individuals* **OR** submission of all NPIs within the TIN when reporting as a *group practice*
- 2 – At least **one** Medicare Part B beneficiary that is eligible for at least one of the eMeasures either via QRDA Category I or III files
- 3 – Valid HIC# for Medicare beneficiaries on QRDA Category I files
- 4 – Payers for all eligible patients identified on QRDA Category I or III files
- 5 – All of the identifiers for the eMeasures the eligible professional or group practice intends to report must be included in the appropriate fields of the QRDA Category I or III files even if they do not have any eligible patients for those eMeasures
- 6 – Performance rate(s) (or a measure observation value) must be included in the QRDA Category III file for every eMeasure the eligible professional intended to report according to the performance rate (or measure observation) algorithms provided in each of the flows
- 7 – All of the detailed data pertaining to the eMeasures the eligible professional intends to report must be included in the patient-level QRDA Category I files so that the system may generate accurate performance rate(s) (or a measure observation value)
- 8 – For every patient evaluated for the eMeasures also identify payer, race, ethnicity and sex.

2014 eMeasure Flows  
eMeasure Identifier: 136

NQF 0108: ADHD: Follow-Up Care for Children Prescribed Attention-Deficit/Hyperactivity Disorder (ADHD) Medication

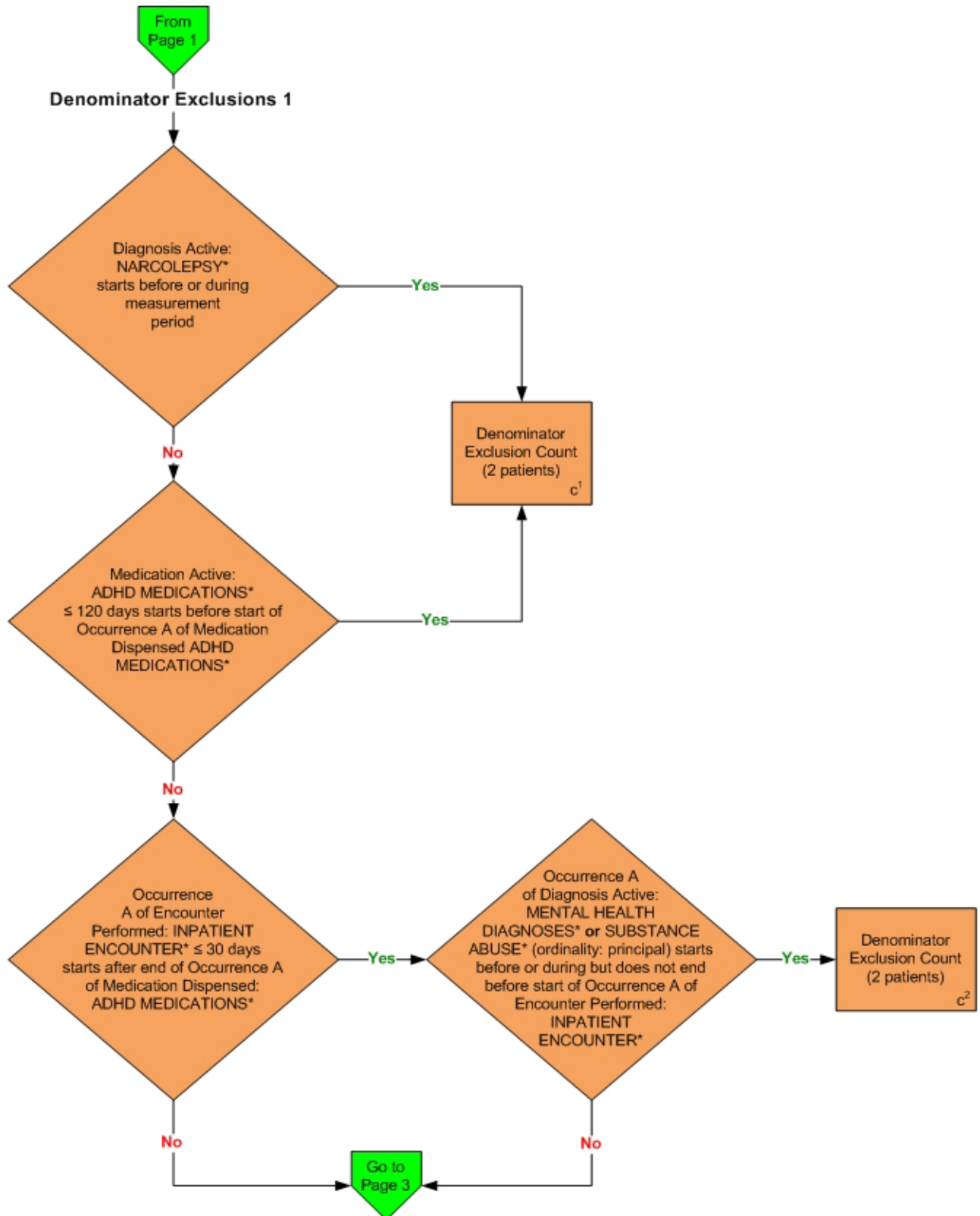
*This eMeasure requires the reporting of two Performance Rates*



\*Please refer to the specific section of the eMeasure to identify the QDM data elements and associated value sets for use in reporting this eMeasure.  
‡ Appropriate encounters include: Office Visit, Face-to-Face Interaction, Home Health Services, Preventive Care – Established Office Visit 0 to 17, Preventive Care – Initial Office Visit 0 to 17.

2014 eMeasure Flows  
eMeasure Identifier: 136

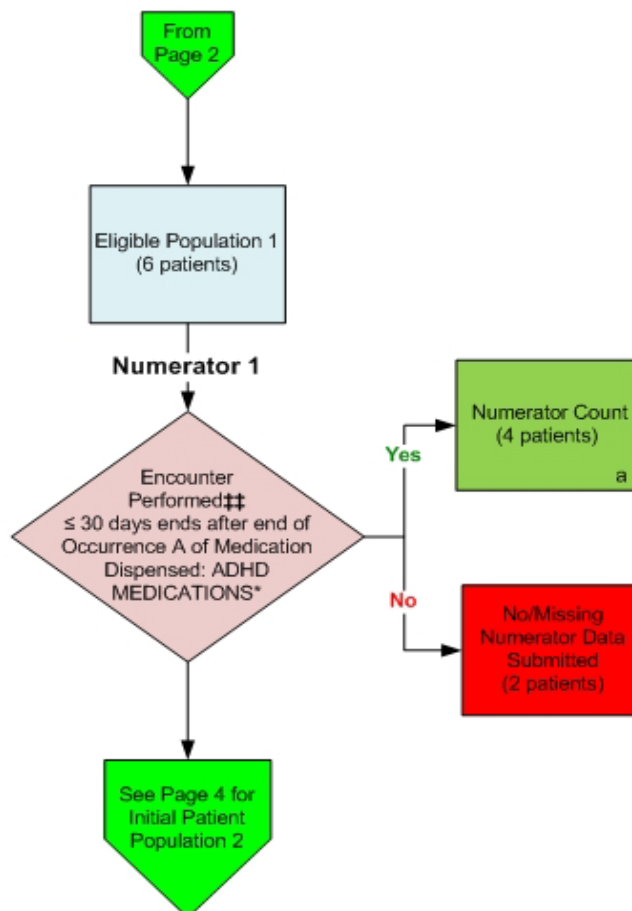
NQF 0108: ADHD: Follow-Up Care for Children Prescribed Attention-Deficit/Hyperactivity Disorder (ADHD) Medication



\*Please refer to the specific section of the eMeasure to identify the QDM data elements and associated value sets for use in reporting this eMeasure.

2014 eMeasure Flows  
eMeasure Identifier: 136

NQF 0108: ADHD: Follow-Up Care for Children Prescribed Attention-Deficit/Hyperactivity Disorder (ADHD) Medication



## Appropriate encounters include: Office Visit, Hospital Observation Care – Initial, Home Healthcare Services, Preventive Care – Initial Office Visit 0 to 17, Psych Visit – Psychotherapy, Psych Visit – Diagnostic Evaluation, Preventive Care – Established Office Visit 0 – 17, Preventive Care Services – Group Counseling, Preventive Care Services – Individual Counseling, Behavioral Health Follow-up Visit, Face-to-Face Interaction, Psychotherapy and Pharmacologic Management (facility location: Ambulatory), Discharge Services – Observation Care, Outpatient Consultation.

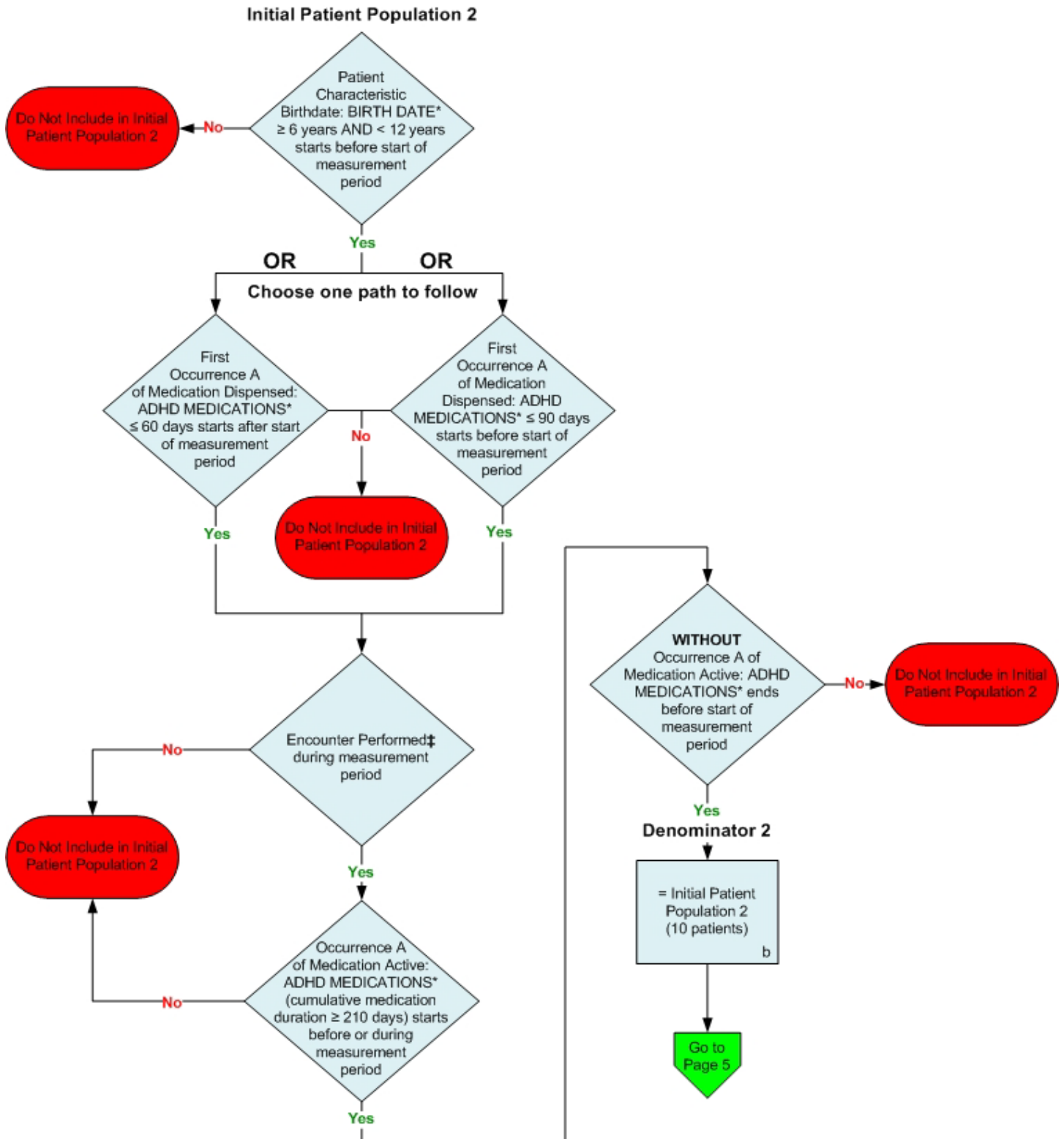
**SAMPLE CALCULATION:** *Combination of Initial Patient Population 1; Denominator 1; Numerator 1*

**Performance Rate =**

$$\frac{\text{Numerator (a=4 patients)}}{\text{Denominator (b=10 patients) – Denominator Exclusions (c<sup>1</sup> + c<sup>2</sup> = 4 patients) – Denominator Exceptions (N/A)}} = 66.67\%$$

2014 eMeasure Flows  
eMeasure Identifier: 136

NQF 0108: ADHD: Follow-Up Care for Children Prescribed Attention-Deficit/Hyperactivity Disorder (ADHD) Medication

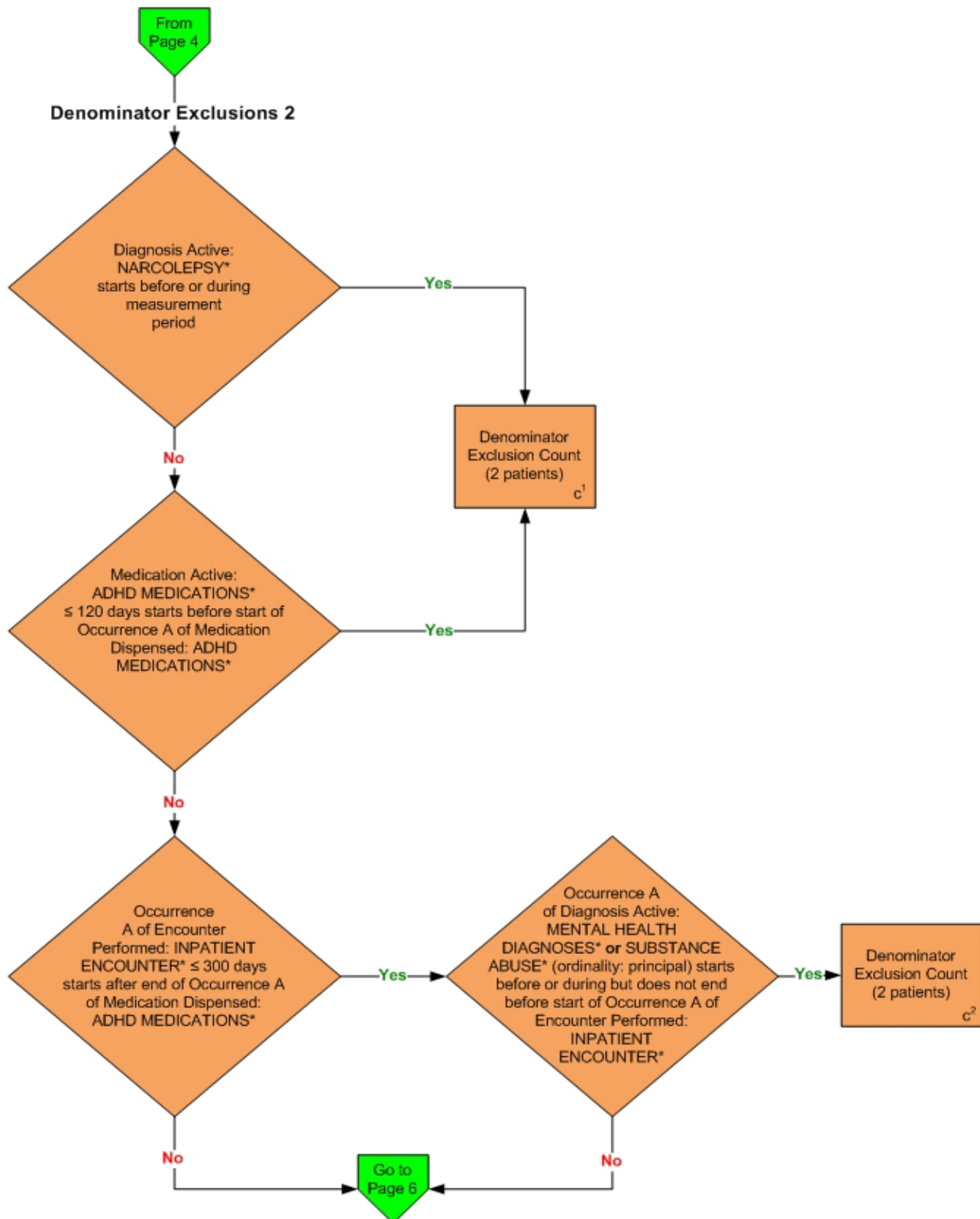


\*Please refer to the specific section of the eMeasure to identify the QDM data elements and associated value sets for use in reporting this eMeasure.

‡ Appropriate encounters include: Office Visit, Face-to-Face Interaction, Home Health Services, Preventive Care – Established Office Visit 0 to 17, Preventive Care – Initial Office Visit 0 to 17.

2014 eMeasure Flows  
eMeasure Identifier: 136

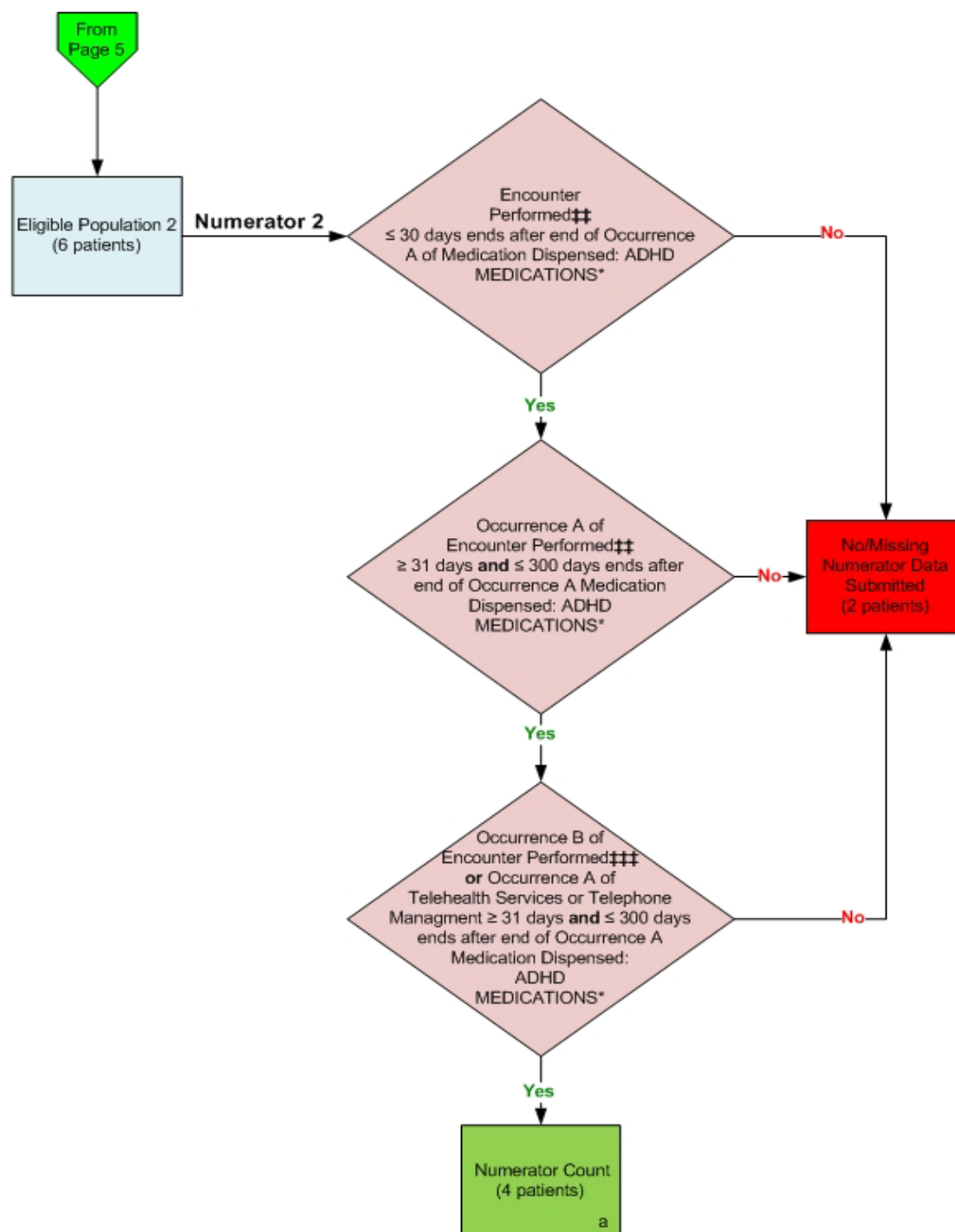
NQF 0108: ADHD: Follow-Up Care for Children Prescribed Attention-Deficit/Hyperactivity Disorder (ADHD) Medication



\*Please refer to the specific section of the eMeasure to identify the QDM data elements and associated value sets for use in reporting this eMeasure.

# 2014 eMeasure Flows eMeasure Identifier: 136

NQF 0108: ADHD: Follow-Up Care for Children Prescribed Attention-Deficit/Hyperactivity Disorder (ADHD) Medication



\*Please refer to the specific section of the eMeasure to identify the QDM data elements and associated value sets for use in reporting this eMeasure.

## Appropriate encounters include: Office Visit, Hospital Observation Care – Initial, Preventive Care Services – individual Counseling, Behavioral Health Follow-up Visit, Face-to-Face Interaction, Psychotherapy and Pharmacologic Management, Discharge Services – Observation Care, Outpatient Consultation, Home Healthcare Services, Preventive Care – Initial Office Visit, 0 to 17, Preventive Care – Established Office Visit 0 to 17, Preventive Care Services – Group Counseling, Psych Visit – Diagnostic Evaluation, Psych Visit - Psychotherapy.

### Appropriate encounters include: Office Visit, Hospital Observation Care – Initial, Preventive Care Services – individual Counseling, Behavioral Health Follow-up Visit, Face-to-Face Interaction, Psychotherapy and Pharmacologic Management, Discharge Services – Observation Care, Outpatient Consultation, Home Healthcare Services, Preventive Care – Initial Office Visit, 0 to 17, Preventive Care – Established Office Visit 0 to 17, Preventive Care Services – Group Counseling, Psych Visit – Diagnostic Evaluation, Psych Visit - Psychotherapy .

2014 eMeasure Flows  
eMeasure Identifier: 136

NQF 0108: ADHD: Follow-Up Care for Children Prescribed Attention-Deficit/Hyperactivity Disorder (ADHD) Medication

**SAMPLE CALCULATION:** *Combination of Initial Patient Population 2; Denominator 2; Numerator 2*

**Performance Rate =**

$$\frac{\text{Numerator (a=4 patients)}}{\text{Denominator (b=10 patients) - Denominator Exclusions (c}^1\text{ + c}^2\text{=4 patients) - Denominator Exceptions (N/A)}} = 66.67\%$$



2014 eMeasure Flows  
eMeasure Identifier: 136

NQF 0108: ADHD: Follow-Up Care for Children Prescribed Attention-Deficit/Hyperactivity Disorder  
(ADHD) Medication

*This eMeasure requires the reporting of two Performance Rates*

Please refer to the specific section of the eMeasure to identify the QDM data elements and associated value sets for use in reporting this eMeasure.

1. Start Initial Patient Population 1
2. Check Patient Characteristic Birthdate:
  - a. If QDM data element, BIRTH DATE, is greater than or equal to 6 years of age AND less than 12 years of age starts before start of the measurement period, equals No, do not include in Initial Patient Population 1. Stop Processing.
  - b. If QDM data element, BIRTH DATE, is greater than or equal to 6 years of age AND less than 12 years of age starts before start of the measurement period, equals Yes, continue processing and proceed to check Medication Dispensed.
3. Check Medication Dispensed:
  - a. If First Occurrence A of QDM data element, ADHD MEDICATIONS, less than or equal to 60 days starts after start of measurement period OR if First Occurrence A of QDM data element, ADHD MEDICATIONS, less than or equal to 90 days starts before start of measurement period equals Yes, Continue on to Encounter Performed.
  - b. If First Occurrence A of QDM data element, ADHD MEDICATIONS, less than or equal to 60 days starts after start of measurement period OR if First Occurrence A of QDM data element, ADHD MEDICATIONS, less than or equal to 90 days starts before start of measurement period equals No, do not include in Initial Patient Population 1. Stop processing.
4. Check Encounter Performed:
  - a. If QDM data element, OFFICE VISIT, during measurement period equals Yes, include in Initial Patient Population 1 and proceed to Denominator 1.
  - b. If QDM data element, OFFICE VISIT, during measurement period equals No, proceed to check next Encounter Performed.
  - c. If QDM data element, HOME HEALTHCARE SERVICES, during measurement period equals Yes, include in Initial Patient Population 1 and proceed to Denominator 1.
  - d. If QDM data element, HOME HEALTHCARE SERVICES, during measurement period equals No, proceed to check next Encounter Performed.
  - e. If QDM data element, PREVENTIVE CARE – INITIAL OFFICE VISIT, 0 TO 17 during measurement period equals Yes, include in Initial Patient Population 1 and proceed to Denominator 1.
  - f. If QDM data element, PREVENTIVE CARE – INITIAL OFFICE VISIT, 0 TO 17, during the measurement period equals No, proceed to check next Encounter Performed.

- g. If QDM data element, PREVENTIVE CARE – ESTABLISHED OFFICE VISIT, 0 TO 17, during the measurement period equals Yes, include in Initial Patient Population 1 and proceed to Denominator 1.
  - h. If QDM data element, PREVENTIVE CARE – ESTABLISHED OFFICE VISIT, 0 TO 17, during the measurement period equals No, proceed to check next Encounter Performed.
  - i. If QDM data element, FACE-TO-FACE INTERACTION, during the measurement period equals Yes, include in Initial Patient Population 1 and proceed to Denominator 1.
  - j. If QDM data element, FACE-TO-FACE INTERACTION, during the measurement period equals No, do not include in Initial Patient Population 1. Stop processing.
5. Start Denominator 1
- a. Denominator equals the Initial Patient Population 1. Denominator 1 is represented by the letter B in the sample calculation listed at the end of this document. Letter B equals 10 patients in the sample calculation.
6. Start Denominator Exclusions 1:
7. Check Diagnosis Active:
- a. If QDM data element NARCOLEPSY starts before or during measurement period equals Yes, include in Denominator Exclusion Count. Exclusions are represented by the letter C1 in the sample calculation listed at the end of Initial Patient Population. Letter C1 equals 2 patients in the sample calculation.
  - b. If QDM data element NARCOLEPSY starts before or during measurement period equals No, proceed to check Medication Active.
8. Check Diagnosis Active:
- a. If QDM data element ADHD MEDICATIONS less than or equal to 120 days starts before start of Occurrence A of Medication Dispensed QDM data element ADHD MEDICATIONS equals Yes, include in Denominator Exclusion Count. Exclusions are represented by the letter C1 in the sample calculation listed at the end of Initial Patient Population. Letter C1 equals 2 patients in the sample calculation.
  - b. If QDM data element ADHD MEDICATIONS less than or equal to 120 days starts before start of Occurrence A of Medication Dispensed QDM data element ADHD MEDICATIONS equals No, proceed to check Encounter Performed.
9. Check Encounter Performed:
- a. If Occurrence A of QDM data element INPATIENT ENCOUNTER less than or equal to 30 days starts after end of Occurrence A of QDM data element ADHD MEDICATIONS equals Yes, proceed to check Diagnosis Active.
  - b. If Occurrence A of QDM data element INPATIENT ENCOUNTER less than or equal to 30 days starts after end of Occurrence A of QDM data element ADHD MEDICATIONS equals No, include in Initial Patient Population 1 and proceed Numerator 1.
10. Check Diagnosis Active:
- a. If Occurrence A of QDM data element MENTAL HEALTH DIAGNOSES (ordinality: principle) OR SUBSTANCE ABUSE (ordinality: principle) starts

before or during but does not end before start of Occurrence A of QDM data element INPATIENT ENCOUNTER equals Yes, include in Denominator Exclusion Count. Exclusions are represented by the letter C<sup>2</sup> in the sample calculation listed at the end of Initial Patient Population. Letter C<sup>2</sup> equals 2 patients in the sample calculation.

- b. Occurrence A of QDM data element MENTAL HEALTH DIAGNOSES (ordinality: principle) OR SUBSTANCE ABUSE (ordinality: principle) starts before or during but does not end before start of Occurrence A of QDM data element INPATIENT ENCOUNTER equals No, include in Initial Patient Population 1 and proceed to Numerator 1.

#### 11. Start Numerator 1

#### 12. Check Encounter Performed:

- a. If QDM data element OFFICE VISIT less than or equal to 30 days ends after end of Occurrence A of Medication Dispensed QDM data element ADHD MEDICATIONS equals Yes, include in Numerator Count. Numerator is represented by letter A in the sample calculation listed at the end of this document. Letter A equals 4 patients in the sample calculation. Proceed to Initial Patient Population 2.
- b. If QDM data element OFFICE VISIT less than or equal to 30 days ends after end of Occurrence A of Medication Dispensed QDM data element ADHD MEDICATIONS equals No, proceed to check next Encounter Performed.
- c. If QDM data element HOSPITAL OBSERVATION CARE - INITIAL less than or equal to 30 days ends after end of Occurrence A of Medication Dispensed QDM data element ADHD MEDICATIONS equals Yes, include in Numerator Count. Numerator is represented by letter A in the sample calculation listed at the end of this document. Letter A equals 4 patients in the sample calculation. Proceed to Initial Patient Population 2.
- d. If QDM data element HOSPITAL OBSERVATION CARE - INITIAL less than or equal to 30 days ends after end of Occurrence A of Medication Dispensed QDM data element ADHD MEDICATIONS equals No, proceed to check next Encounter Performed.
- e. If QDM data element PREVENTIVE CARE - ESTABLISHED OFFICE VISIT, 0 TO 17 less than or equal to 30 days ends after end of Occurrence A of Medication Dispensed QDM data element ADHD MEDICATIONS equals Yes, include in Numerator Count. Numerator is represented by letter A in the sample calculation listed at the end of this document. Letter A equals 4 patients in the sample calculation. Proceed to Initial Patient Population 2.
- f. If QDM data element PREVENTIVE CARE - ESTABLISHED OFFICE VISIT, 0 TO 17 less than or equal to 30 days ends after end of Occurrence A of Medication Dispensed QDM data element ADHD MEDICATIONS equals No, proceed to check next Encounter Performed.
- g. If QDM data element PREVENTIVE CARE SERVICES - GROUP COUNSELING less than or equal to 30 days ends after end of Occurrence A of Medication Dispensed QDM data element ADHD MEDICATIONS equals Yes, include in Numerator Count. Numerator is represented by letter A in the sample calculation

listed at the end of this document. Letter A equals 4 patients in the sample calculation. Proceed to Initial Patient Population 2.

- h. If QDM data element PREVENTIVE CARE SERVICES - GROUP COUNSELING less than or equal to 30 days ends after end of Occurrence A of Medication Dispensed QDM data element ADHD MEDICATIONS equals No, proceed to check next Encounter Performed.
- i. If QDM data element PREVENTIVE CARE SERVICES-INDIVIDUAL COUNSELING less than or equal to 30 days ends after end of Occurrence A of Medication Dispensed QDM data element ADHD MEDICATIONS equals Yes, include in Numerator Count. Numerator is represented by letter A in the sample calculation listed at the end of this document. Letter A equals 4 patients in the sample calculation. Proceed to Initial Patient Population 2.
- j. If QDM data element PREVENTIVE CARE SERVICES-INDIVIDUAL COUNSELING less than or equal to 30 days ends after end of Occurrence A of Medication Dispensed QDM data element ADHD MEDICATIONS equals No, proceed to check next Encounter Performed.
- k. If QDM data element BEHAVIORAL HEALTH FOLLOW-UP VISIT less than or equal to 30 days ends after end of Occurrence A of Medication Dispensed QDM data element ADHD MEDICATIONS equals Yes, include in Numerator Count. Numerator is represented by letter A in the sample calculation listed at the end of this document. Letter A equals 4 patients in the sample calculation. Proceed to Initial Patient Population 2. Proceed to Initial Patient Population 2.
- l. If QDM data element BEHAVIORAL HEALTH FOLLOW-UP VISIT less than or equal to 30 days ends after end of Occurrence A of Medication Dispensed QDM data element ADHD MEDICATIONS equals No, proceed to check next Encounter Performed.
- m. If QDM data element FACE-TO-FACE INTERACTION less than or equal to 30 days ends after end of Occurrence A of Medication Dispensed QDM data element ADHD MEDICATIONS equals Yes, include in Numerator Count. Numerator is represented by letter A in the sample calculation listed at the end of this document. Letter A equals 4 patients in the sample calculation. Proceed to Initial Patient Population 2.
- n. If QDM data element FACE-TO-FACE INTERACTION less than or equal to 30 days ends after end of Occurrence A of Medication Dispensed QDM data element ADHD MEDICATIONS equals No, proceed to check next Encounter Performed.
- o. If QDM data element PSYCHOTHERAPY AND PHARMACOLOGIC MANAGEMENT (facility location: 'Ambulatory') less than or equal to 30 days ends after end of Occurrence A of Medication Dispensed QDM data element ADHD MEDICATIONS equals Yes, include in Numerator Count. Numerator is represented by letter A in the sample calculation listed at the end of this document. Letter A equals 4 patients in the sample calculation. Proceed to Initial Patient Population 2.
- p. If QDM data element PSYCHOTHERAPY AND PHARMACOLOGIC MANAGEMENT (facility location: 'Ambulatory') less than or equal to 30 days ends after end of Occurrence A of Medication Dispensed QDM data element ADHD MEDICATIONS equals No, proceed to check next Encounter Performed.

- q. If QDM data element DISCHARGE SERVICES- OBSERVATION CARE less than or equal to 30 days ends after end of Occurrence A of Medication Dispensed QDM data element ADHD MEDICATIONS equals Yes, include in Numerator Count. Numerator is represented by letter A in the sample calculation listed at the end of this document. Letter A equals 4 patients in the sample calculation. Proceed to Initial Patient Population 2.
- r. If QDM data element DISCHARGE SERVICES- OBSERVATION CARE less than or equal to 30 days ends after end of Occurrence A of Medication Dispensed QDM data element ADHD MEDICATIONS equals No, proceed to check next Encounter Performed.
- s. If QDM data element OUTPATIENT CONSULTATION less than or equal to 30 days ends after end of Occurrence A of Medication Dispensed QDM data element ADHD MEDICATIONS equals Yes, include in Numerator Count. Numerator is represented by letter A in the sample calculation listed at the end of this document. Letter A equals 4 patients in the sample calculation. Proceed to Initial Patient Population 2.
- t. If QDM data element OUTPATIENT CONSULTATION less than or equal to 30 days ends after end of Occurrence A of Medication Dispensed QDM data element ADHD MEDICATIONS equals No, proceed to check next Encounter Performed.
- u. If QDM data element HOME HEALTHCARE SERVICES less than or equal to 30 days ends after end of Occurrence A of Medication Dispensed QDM data element ADHD MEDICATIONS equals Yes, include in Numerator Count. Numerator is represented by letter A in the sample calculation listed at the end of this document. Letter A equals 4 patients in the sample calculation. Proceed to Initial Patient Population 2.
- v. If QDM data element HOME HEALTHCARE SERVICES less than or equal to 30 days ends after end of Occurrence A of Medication Dispensed QDM data element ADHD MEDICATIONS equals No, proceed to check next Encounter Performed.
- w. If QDM data element PREVENTIVE CARE- INITIAL OFFICE VISIT, 0 TO 17 less than or equal to 30 days ends after end of Occurrence A of Medication Dispensed QDM data element ADHD MEDICATIONS equals Yes, include in Numerator Count. Numerator is represented by letter A in the sample calculation listed at the end of this document. Letter A equals 4 patients in the sample calculation. Proceed to Initial Patient Population 2.
- x. If QDM data element PREVENTIVE CARE- INITIAL OFFICE VISIT, 0 TO 17 less than or equal to 30 days ends after end of Occurrence A of Medication Dispensed QDM data element ADHD MEDICATIONS equals No, proceed to check next Encounter Performed.
- y. If QDM data element PSYCH VISIT - PSYCHOTHERAPY less than or equal to 30 days ends after end of Occurrence A of Medication Dispensed QDM data element ADHD MEDICATIONS equals Yes, include in Numerator Count. Numerator is represented by letter A in the sample calculation listed at the end of this document. Letter A equals 4 patients in the sample calculation. Proceed to Initial Patient Population 2.
- z. If QDM data element PSYCH VISIT - PSYCHOTHERAPY less than or equal to 30 days ends after end of Occurrence A of Medication Dispensed QDM data element ADHD MEDICATIONS equals No, proceed to check next Encounter Performed.

- aa. If QDM data element PSYCH VISIT – DIAGNOSTIC EVALUATION less than or equal to 30 days ends after end of Occurrence A of Medication Dispensed QDM data element ADHD MEDICATIONS equals Yes, include in Numerator Count. Numerator is represented by letter A in the sample calculation listed at the end of this document. Letter A equals 4 patients in the sample calculation. Proceed to Initial Patient Population 2.
- bb. If QDM data element PSYCH VISIT – DIAGNOSTIC EVALUATION less than or equal to 30 days ends after end of Occurrence A of Medication Dispensed QDM data element ADHD MEDICATIONS equals No, include in the No/Missing Numerator Data Submitted count and stop processing for Numerator 1. Proceed to Initial Patient Population 2.

**SAMPLE CALCULATION:** *Combination of Initial Patient Population 1; Denominator 1; Numerator 1*

**Performance Rate =**

Numerator (a=4 patients)

÷

Denominator (b=10 patients) – Denominator Exclusions ( $c^1 + c^2 = 4$  patients) – *Denominator Exceptions (N/A)*

= **66.67%**

## 2014 eMeasure Flows

### eMeasure Identifier: 136

NQF 0108: ADHD: Follow-Up Care for Children Prescribed Attention-Deficit/Hyperactivity Disorder (ADHD) Medication

*This eMeasure requires the reporting of two Performance Rates*

Please refer to the specific section of the eMeasure to identify the QDM data elements and associated value sets for use in reporting this eMeasure.

1. Start Initial Patient Population 2
2. Check Patient Characteristic Birthdate:
  - a. If QDM data element BIRTH DATE is greater than or equal to 6 years of age AND less than 12 years of age starts before start of the measurement period equals No, do not include in Initial Patient Population 2. Stop Processing.
  - b. If QDM data element BIRTH DATE is greater than or equal to 6 years of age AND less than 12 years of age starts before start of the measurement period, equals Yes, continue processing and proceed to check Medication Dispensed
3. Check Medication Dispensed:
  - a. If First Occurrence A of QDM data element ADHD MEDICATIONS less than or equal to 60 days starts after start of measurement period OR if First Occurrence A of QDM data element ADHD MEDICATIONS less than or equal to 90 days starts before start of measurement period equals Yes, proceed to check Encounter Performed.
  - b. If First Occurrence A of QDM data element ADHD MEDICATIONS less than or equal to 60 days starts after start of measurement period OR if First Occurrence A

of QDM data element ADHD MEDICATIONS less than or equal to 90 days starts before start of measurement period equals No, do not include in Initial Patient Population 2. Stop processing.

4. Check Encounter Performed:

- a. If QDM data element OFFICE VISIT during measurement period equals Yes, proceed to check Medication Active.
- b. If QDM data element OFFICE VISIT during measurement period equals No, proceed to check next Encounter Performed.
- c. If QDM data element HOME HEALTHCARE SERVICES during measurement period equals Yes, proceed to check Medication Active.
- d. If QDM data element HOME HEALTHCARE SERVICES during measurement period equals No, proceed to check next Encounter Performed.
- e. If QDM data element PREVENTIVE CARE – INITIAL OFFICE VISIT, 0 TO 17 during the measurement period equals Yes, proceed to check Medication Active.
- f. If QDM data element PREVENTIVE CARE – INITIAL OFFICE VISIT, 0 TO 17 during the measurement period equals No, proceed to check next Encounter Performed.
- g. If QDM data element PREVENTIVE CARE – ESTABLISHED OFFICE VISIT, 0 TO 17 during the measurement period equals Yes, proceed to check Medication Active.
- h. If QDM data element PREVENTIVE CARE – ESTABLISHED OFFICE VISIT, 0 TO 17 during the measurement period equals No, proceed to check next Encounter Performed.
- i. If QDM data element FACE-TO-FACE INTERACTION during the measurement period equals Yes, proceed to check Medication Active.
- j. If QDM data element FACE-TO-FACE INTERACTION during the measurement period equals No, do not include in Initial Patient Population 2. Stop processing.

5. Check Medication Active:

- a. If Occurrence A of QDM data element ADHD MEDICATIONS (cumulative medication duration greater than or equal to 210 days) starts before or during measurement period equals Yes, proceed to check next Medication Active.
- b. If Occurrence A of QDM data element ADHD MEDICATIONS (cumulative medication duration greater than or equal to 210 days) starts before or during measurement period equals No, do not include in Initial Patient Population 2. Stop processing.

6. Check Medication Active:

- a. If WITHOUT Occurrence A of QDM data element ADHD MEDICATIONS ends before start of measurement period equals Yes, include in Initial Patient Population 2 and proceed to Denominator 2.
- b. If WITHOUT Occurrence A of QDM data element ADHD MEDICATIONS ends before start of measurement period equals No, do not include in Initial Patient Population 2. Stop Processing

7. Start Denominator 2

- a. Denominator equals the Initial Patient Population 2. Denominator 2 is represented by the letter B in the sample calculation listed at the end of this document. Letter B equals 10 patients in the sample calculation.

8. Start Denominator Exclusions 2:

9. Check Diagnosis Active:

- a. If QDM data element NARCOLEPSY starts before or during measurement period equals Yes, include Denominator Exclusion Count box. Exclusions are represented by the letter C1 in the sample calculation listed at the end of Initial Patient Population. Letter C1 equals 2 patients in the sample calculation.
- b. If QDM data element NARCOLEPSY starts before or during measurement period equals No, proceed to check Medication Active.

10. Check Medication Active:

- a. If QDM data element ADHD MEDICATIONS less than or equal to 120 days starts before start of Occurrence A of Medication Dispensed QDM data element ADHD MEDICATIONS equals Yes, include Denominator Exclusion 2 count box. Exclusions are represented by the letter C<sup>1</sup> in the sample calculation listed at the end of Initial Patient Population. Letter C<sup>1</sup> equals 2 patients in the sample calculation.
- b. If QDM data element ADHD MEDICATIONS less than or equal to 120 days starts before start of Occurrence A of Medication Dispensed QDM data element ADHD MEDICATIONS equals No, proceed to check Encounter Performed.

11. Check Encounter Performed:

- a. If Occurrence A of QDM data element INPATIENT ENCOUNTER less than or equal to 300 days starts after end of Occurrence A of Medication Dispensed QDM data element ADHD MEDICATIONS AND Occurrence A of Diagnosis Active QDM data element MENTAL HEALTH DIAGNOSES (ordinality: principle) OR SUBSTANCE ABUSE (ordinality: principle) starts before or during but does not end before start of Occurrence A of QDM data element INPATIENT ENCOUNTER equals Yes, include Denominator Exclusion 2 count box. Exclusions are represented by the letter C<sup>2</sup> in the sample calculation listed at the end of Initial Patient Population. Letter C<sup>2</sup> equals 2 patients in the sample calculation.
- b. If Occurrence A of QDM data element INPATIENT ENCOUNTER less than or equal to 300 days starts after end of Occurrence A of Medication Dispensed QDM data element ADHD MEDICATIONS AND Occurrence A of Diagnosis Active QDM data element MENTAL HEALTH DIAGNOSES (ordinality: principle) OR SUBSTANCE ABUSE (ordinality: principle) starts before or during but does not end before start of Occurrence A of QDM data element INPATIENT ENCOUNTER equals No, proceed to Numerator 2.

12. Start Numerator 2

13. Check Encounter Performed:

- a. If QDM data element OFFICE VISIT less than or equal to 30 days ends after end of Occurrence A of Medication Dispensed QDM data element ADHD MEDICATIONS



equals Yes, proceed to check Occurrence A of Encounter Performed starting on line 14.

- b. If QDM data element OFFICE VISIT less than or equal to 30 days ends after end of Occurrence A of Medication Dispensed QDM data element ADHD MEDICATIONS equals No, proceed to check next Encounter Performed.
- c. If QDM data element HOSPITAL OBSERVATION CARE - INITIAL less than or equal to 30 days ends after end of Occurrence A of Medication Dispensed QDM data element ADHD MEDICATIONS equals Yes, proceed to check Occurrence A of Encounter Performed starting on line 14.
- d. If QDM data element HOSPITAL OBSERVATION CARE - INITIAL less than or equal to 30 days ends after end of Occurrence A of Medication Dispensed QDM data element ADHD MEDICATIONS equals No, proceed to check next Encounter Performed.
- e. If QDM data element PREVENTIVE CARE - ESTABLISHED OFFICE VISIT, 0 TO 17 less than or equal to 30 days ends after end of Occurrence A of Medication Dispensed QDM data element ADHD MEDICATIONS equals Yes, proceed to check Occurrence A of Encounter Performed starting on line 14.
- f. If QDM data element PREVENTIVE CARE - ESTABLISHED OFFICE VISIT, 0 TO 17 less than or equal to 30 days ends after end of Occurrence A of Medication Dispensed QDM data element ADHD MEDICATIONS equals No, proceed to check next Encounter Performed.
- g. If QDM data element PREVENTIVE CARE SERVICES - GROUP COUNSELING less than or equal to 30 days ends after end of Occurrence A of Medication Dispensed QDM data element ADHD MEDICATIONS equals Yes, proceed to check Occurrence A of Encounter Performed starting on line 14.
- h. If QDM data element PREVENTIVE CARE SERVICES - GROUP COUNSELING less than or equal to 30 days ends after end of Occurrence A of Medication Dispensed QDM data element ADHD MEDICATIONS equals No, proceed to check next Encounter Performed.
- i. If QDM data element PREVENTIVE CARE SERVICES-INDIVIDUAL COUNSELING less than or equal to 30 days ends after end of Occurrence A of Medication Dispensed QDM data element ADHD MEDICATIONS equals Yes, proceed to check Occurrence A of Encounter Performed starting on line 14.
- j. If QDM data element PREVENTIVE CARE SERVICES-INDIVIDUAL COUNSELING less than or equal to 30 days ends after end of Occurrence A of Medication Dispensed QDM data element ADHD MEDICATIONS equals No, proceed to check next Encounter Performed.
- k. If QDM data element BEHAVIORAL HEALTH FOLLOW-UP VISIT less than or equal to 30 days ends after end of Occurrence A of Medication Dispensed QDM data element ADHD MEDICATIONS equals Yes, proceed to check Occurrence A of Encounter Performed starting on line 14.
- l. If QDM data element BEHAVIORAL HEALTH FOLLOW-UP VISIT less than or equal to 30 days ends after end of Occurrence A of Medication Dispensed QDM data element ADHD MEDICATIONS equals No, proceed to check next Encounter Performed.
- m. If QDM data element FACE-TO-FACE INTERACTION less than or equal to 30 days ends after end of Occurrence A of Medication Dispensed QDM data element ADHD

MEDICATIONS equals Yes, proceed to check Occurrence A of Encounter Performed starting on line 14.

- n. If QDM data element FACE-TO-FACE INTERACTION less than or equal to 30 days ends after end of Occurrence A of Medication Dispensed QDM data element ADHD MEDICATIONS equals No, proceed to check next Encounter Performed.
- o. If QDM data element PSYCHOTHERAPY AND PHARMACOLOGIC MANAGEMENT (facility location: 'Ambulatory') less than or equal to 30 days ends after end of Occurrence A of Medication Dispensed QDM data element ADHD MEDICATIONS equals Yes, proceed to check Occurrence A of Encounter Performed starting on line 14.
- p. If QDM data element PSYCHOTHERAPY AND PHARMACOLOGIC MANAGEMENT (facility location: 'Ambulatory') less than or equal to 30 days ends after end of Occurrence A of Medication Dispensed QDM data element ADHD MEDICATIONS equals No, proceed to check next Encounter Performed.
- q. If QDM data element DISCHARGE SERVICES- OBSERVATION CARE less than or equal to 30 days ends after end of Occurrence A of Medication Dispensed QDM data element ADHD MEDICATIONS equals Yes, proceed to check Occurrence A of Encounter Performed starting on line 14.
- r. If QDM data element DISCHARGE SERVICES- OBSERVATION CARE less than or equal to 30 days ends after end of Occurrence A of Medication Dispensed QDM data element ADHD MEDICATIONS equals No, proceed to check next Encounter Performed.
- s. If QDM data element OUTPATIENT CONSULTATION less than or equal to 30 days ends after end of Occurrence A of Medication Dispensed QDM data element ADHD MEDICATIONS equals Yes, proceed to check Occurrence A of Encounter Performed starting on line 14.
- t. If QDM data element OUTPATIENT CONSULTATION less than or equal to 30 days ends after end of Occurrence A of Medication Dispensed QDM data element ADHD MEDICATIONS equals No, proceed to check next Encounter Performed.
- u. If QDM data element HOME HEALTHCARE SERVICES less than or equal to 30 days ends after end of Occurrence A of Medication Dispensed QDM data element ADHD MEDICATIONS equals Yes, proceed to check Occurrence A of Encounter Performed starting on line 14.
- v. If QDM data element HOME HEALTHCARE SERVICES less than or equal to 30 days ends after end of Occurrence A of Medication Dispensed QDM data element ADHD MEDICATIONS equals No, proceed to check next Encounter Performed.
- w. If QDM data element PREVENTIVE CARE- INITIAL OFFICE VISIT, 0 TO 17 less than or equal to 30 days ends after end of Occurrence A of Medication Dispensed QDM data element ADHD MEDICATIONS equals Yes, proceed to check Occurrence A of Encounter Performed starting on line 14.
- x. If QDM data element PREVENTIVE CARE- INITIAL OFFICE VISIT, 0 TO 17 less than or equal to 30 days ends after end of Occurrence A of Medication Dispensed QDM data element ADHD MEDICATIONS equals No, proceed to check next Encounter Performed.
- y. If QDM data element PSYCH VISIT - PSYCHOTHERAPY less than or equal to 30 days ends after end of Occurrence A of Medication Dispensed QDM data element

ADHD MEDICATIONS equals Yes, proceed to check Occurrence A of Encounter Performed starting on line 14.

- z. If QDM data element PSYCH VISIT - PSYCHOTHERAPY less than or equal to 30 days ends after end of Occurrence A of Medication Dispensed QDM data element ADHD MEDICATIONS equals No, proceed to check next Encounter Performed.
- aa. If QDM data element PSYCH VISIT – DIAGNOSTIC EVALUATION less than or equal to 30 days ends after end of Occurrence A of Medication Dispensed QDM data element ADHD MEDICATIONS equals Yes, proceed to check Occurrence A of Encounter Performed starting on line 14.
- bb. If QDM data element PSYCH VISIT – DIAGNOSTIC EVALUATION less than or equal to 30 days ends after end of Occurrence A of Medication Dispensed QDM data element ADHD MEDICATIONS equals No, include in the No/Missing Numerator Data Submitted count and stop processing for Numerator 2.

14. Check Occurrence A of Encounter Performed:

- a. If Occurrence A of QDM data element OFFICE VISIT greater than or equal to 31 days ends after end of Occurrence A of Medication Dispensed QDM data element ADHD MEDICATIONS AND if Occurrence A of QDM data element OFFICE VISIT less than or equal to 300 days ends after end of Occurrence A of Medication Dispensed QDM data element ADHD MEDICATIONS equals Yes, proceed to check Occurrence B of Encounter Performed starting on line 15.
- b. If Occurrence A of QDM data element OFFICE VISIT greater than or equal to 31 days ends after end of Occurrence A of Medication Dispensed QDM data element ADHD MEDICATIONS AND if Occurrence A of QDM data element OFFICE VISIT less than or equal to 300 days ends after end of Occurrence A of Medication Dispensed QDM data element ADHD MEDICATIONS equals No, proceed to check next Occurrence A of Encounter Performed.
- c. If Occurrence A of QDM data element HOSPITAL OBSERVATION CARE - INITIAL greater than or equal to 31 days ends after end of Occurrence A of Medication Dispensed QDM data element ADHD MEDICATIONS AND if Occurrence A of QDM data element HOSPITAL OBSERVATION CARE - INITIAL less than or equal to 300 days ends after end of Occurrence A of Medication Dispensed QDM data element ADHD MEDICATIONS equals Yes, proceed to check Occurrence B of Encounter Performed starting on line 15.
- d. If Occurrence A of QDM data element HOSPITAL OBSERVATION CARE - INITIAL greater than or equal to 31 days ends after end of Occurrence A of Medication Dispensed QDM data element ADHD MEDICATIONS AND if Occurrence A of QDM data element HOSPITAL OBSERVATION CARE - INITIAL less than or equal to 300 days ends after end of Occurrence A of Medication Dispensed QDM data element ADHD MEDICATIONS equals No, proceed to check next Occurrence A of Encounter Performed.
- e. If Occurrence A of QDM data element PREVENTIVE CARE SERVICES - GROUP COUNSELING greater than or equal to 31 days ends after end of Occurrence A of Medication Dispensed QDM data element ADHD MEDICATIONS AND if Occurrence A of QDM data element PREVENTIVE CARE SERVICES - GROUP COUNSELING less than or equal to 300 days ends after end of Occurrence A of Medication Dispensed QDM data element ADHD MEDICATIONS equals Yes, proceed to check Occurrence B of Encounter Performed starting on line 15.

- f. If Occurrence A of QDM data element PREVENTIVE CARE SERVICES - GROUP COUNSELING greater than or equal to 31 days ends after end of Occurrence A of Medication Dispensed QDM data element ADHD MEDICATIONS AND if Occurrence A of QDM data element PREVENTIVE CARE SERVICES - GROUP COUNSELING less than or equal to 300 days ends after end of Occurrence A of Medication Dispensed QDM data element ADHD MEDICATIONS equals No, proceed to check next Occurrence A of Encounter Performed.
- g. If Occurrence A of QDM data element BEHAVIORAL HEALTH FOLLOW-UP VISIT greater than or equal to 31 days ends after end of Occurrence A of Medication Dispensed QDM data element ADHD MEDICATIONS AND if Occurrence A of QDM data element BEHAVIORAL HEALTH FOLLOW-UP VISIT less than or equal to 300 days ends after end of Occurrence A of Medication Dispensed QDM data element ADHD MEDICATIONS equals Yes, proceed to check Occurrence B of Encounter Performed starting on line 15.
- h. If Occurrence A of QDM data element BEHAVIORAL HEALTH FOLLOW-UP VISIT greater than or equal to 31 days ends after end of Occurrence A of Medication Dispensed QDM data element ADHD MEDICATIONS AND if Occurrence A of QDM data element BEHAVIORAL HEALTH FOLLOW-UP VISIT less than or equal to 300 days ends after end of Occurrence A of Medication Dispensed QDM data element ADHD MEDICATIONS equals No, proceed to check next Occurrence A of Encounter Performed.
- i. If Occurrence A of QDM data element PREVENTIVE CARE SERVICES-INDIVIDUAL COUNSELING greater than or equal to 31 days ends after end of Occurrence A of Medication Dispensed QDM data element ADHD MEDICATIONS AND if Occurrence A of QDM data element PREVENTIVE CARE SERVICES-INDIVIDUAL COUNSELING less than or equal to 300 days ends after end of Occurrence A of Medication Dispensed QDM data element ADHD MEDICATIONS equals Yes, proceed to check Occurrence B of Encounter Performed starting on line 15.
- j. If Occurrence A of QDM data element PREVENTIVE CARE SERVICES-INDIVIDUAL COUNSELING greater than or equal to 31 days ends after end of Occurrence A of Medication Dispensed QDM data element ADHD MEDICATIONS AND if Occurrence A of QDM data element PREVENTIVE CARE SERVICES-INDIVIDUAL COUNSELING less than or equal to 300 days ends after end of Occurrence A of Medication Dispensed QDM data element ADHD MEDICATIONS equals No, proceed to check next Occurrence A of Encounter Performed.
- k. If Occurrence A of QDM data element PSYCHOTHERAPY AND PHARMACOLOGIC MANAGEMENT greater than or equal to 31 days ends after end of Occurrence A of Medication Dispensed QDM data element ADHD MEDICATIONS AND if Occurrence A of QDM data element PSYCHOTHERAPY AND PHARMACOLOGIC MANAGEMENT less than or equal to 300 days ends after end of Occurrence A of Medication Dispensed QDM data element ADHD MEDICATIONS equals Yes, proceed to check Occurrence B of Encounter Performed starting on line 15.
- l. If Occurrence A of QDM data element PSYCHOTHERAPY AND PHARMACOLOGIC MANAGEMENT greater than or equal to 31 days ends after end of Occurrence A of Medication Dispensed QDM data element ADHD

MEDICATIONS AND if Occurrence A of QDM data element PSYCHOTHERAPY AND PHARMACOLOGIC MANAGEMENT less than or equal to 300 days ends after end of Occurrence A of Medication Dispensed QDM data element ADHD MEDICATIONS equals No, proceed to check next Occurrence A of Encounter Performed.

- m. If Occurrence A of QDM data element FACE-TO-FACE INTERACTION greater than or equal to 31 days ends after end of Occurrence A of QDM data element ADHD MEDICATIONS AND if Occurrence A of QDM data element FACE-TO-FACE INTERACTION less than or equal to 300 days ends after end of Occurrence A of Medication Dispensed QDM data element ADHD MEDICATIONS equals Yes, proceed to check Occurrence B of Encounter Performed starting on line 15.
- n. If Occurrence A of QDM data element FACE-TO-FACE INTERACTION greater than or equal to 31 days ends after end of Occurrence A of Medication Dispensed QDM data element ADHD MEDICATIONS AND if Occurrence A of QDM data element FACE-TO-FACE INTERACTION less than or equal to 300 days ends after end of Occurrence A of Medication Dispensed QDM data element ADHD MEDICATIONS equals No, proceed to check next Occurrence A of Encounter Performed.
- o. If Occurrence A of QDM data element DISCHARGE SERVICES- OBSERVATION CARE greater than or equal to 31 days ends after end of Occurrence A of Medication Dispensed QDM data element ADHD MEDICATIONS AND if Occurrence A of QDM data element DISCHARGE SERVICES- OBSERVATION CARE less than or equal to 300 days ends after end of Occurrence A of Medication Dispensed QDM data element ADHD MEDICATIONS equals Yes, proceed to check Occurrence B of Encounter Performed starting on line 15.
- p. If Occurrence A of QDM data element DISCHARGE SERVICES- OBSERVATION CARE greater than or equal to 31 days ends after end of Occurrence A of Medication Dispensed QDM data element ADHD MEDICATIONS AND if Occurrence A of QDM data element DISCHARGE SERVICES- OBSERVATION CARE less than or equal to 300 days ends after end of Occurrence A of Medication Dispensed QDM data element ADHD MEDICATIONS equals No, proceed to check next Occurrence A of Encounter Performed.
- q. If Occurrence A of QDM data element OUTPATIENT CONSULTATION greater than or equal to 31 days ends after end of Occurrence A of Medication Dispensed QDM data element ADHD MEDICATIONS AND if Occurrence A of QDM data element OUTPATIENT CONSULTATION less than or equal to 300 days ends after end of Occurrence A of Medication Dispensed QDM data element ADHD MEDICATIONS equals Yes, proceed to check Occurrence B of Encounter Performed starting on line 15.
- r. If Occurrence A of QDM data element OUTPATIENT CONSULTATION greater than or equal to 31 days ends after end of Occurrence A of Medication Dispensed QDM data element ADHD MEDICATIONS AND if Occurrence A of QDM data element OUTPATIENT CONSULTATION less than or equal to 300 days ends after end of Occurrence A of Medication Dispensed QDM data element ADHD MEDICATIONS equals No, proceed to check next Occurrence A of Encounter Performed.

- s. If Occurrence A of QDM data element HOME HEALTHCARE SERVICES greater than or equal to 31 days ends after end of Occurrence A of Medication Dispensed QDM data element ADHD MEDICATIONS AND if Occurrence A of QDM data element HOME HEALTHCARE SERVICES less than or equal to 300 days ends after end of Occurrence A of Medication Dispensed QDM data element ADHD MEDICATIONS equals Yes, proceed to check Occurrence B of Encounter Performed starting on line 15.
- t. If Occurrence A of QDM data element HEALTHCARE SERVICES greater than or equal to 31 days ends after end of Occurrence A of Medication Dispensed QDM data element ADHD MEDICATIONS AND if Occurrence A of QDM data element HOME HEALTHCARE SERVICES less than or equal to 300 days ends after end of Occurrence A of Medication Dispensed QDM data element ADHD MEDICATIONS equals No, proceed to check next Occurrence A of Encounter Performed.
- u. If Occurrence A of QDM data element PREVENTIVE CARE- INITIAL OFFICE VISIT, 0 TO 17 greater than or equal to 31 days ends after end of Occurrence A of Medication Dispensed QDM data element ADHD MEDICATIONS AND if Occurrence A of QDM data element PREVENTIVE CARE- INITIAL OFFICE VISIT, 0 TO 17 less than or equal to 300 days ends after end of Occurrence A of Medication Dispensed QDM data element ADHD MEDICATIONS equals Yes, proceed to check Occurrence B of Encounter Performed starting on line 15.
- v. If Occurrence A of QDM data element PREVENTIVE CARE- INITIAL OFFICE VISIT, 0 TO 17 greater than or equal to 31 days ends after end of Occurrence A of Medication Dispensed QDM data element ADHD MEDICATIONS AND if Occurrence A of QDM data element PREVENTIVE CARE- INITIAL OFFICE VISIT, 0 TO 17 less than or equal to 300 days ends after end of Occurrence A of Medication Dispensed QDM data element ADHD MEDICATIONS equals No, proceed to check next Occurrence A of Encounter Performed.
- w. If Occurrence A of QDM data element PREVENTIVE CARE - ESTABLISHED OFFICE VISIT, 0 TO 17 greater than or equal to 31 days ends after end of Occurrence A of Medication Dispensed QDM data element ADHD MEDICATIONS AND if Occurrence A of QDM data element PREVENTIVE CARE - ESTABLISHED OFFICE VISIT, 0 TO 17 less than or equal to 300 days ends after end of Occurrence A of Medication Dispensed QDM data element ADHD MEDICATIONS equals Yes, proceed to check Occurrence B of Encounter Performed starting on line 15.
- x. If Occurrence A of QDM data element PREVENTIVE CARE- ESTABLISHED OFFICE VISIT, 0 TO 17 greater than or equal to 31 days ends after end of Occurrence A of Medication Dispensed QDM data element ADHD MEDICATIONS AND if Occurrence A of QDM data element PREVENTIVE CARE - ESTABLISHED OFFICE VISIT, 0 TO 17 less than or equal to 300 days ends after end of Occurrence A of Medication Dispensed QDM data element ADHD MEDICATIONS equals No, proceed to check next Occurrence A of Encounter Performed.
- y. If Occurrence A of QDM data element PSYCH VISIT- DIAGNOSTIC EVALUATION greater than or equal to 31 days ends after end of Occurrence A of Medication Dispensed QDM data element ADHD MEDICATIONS AND if Occurrence A of QDM data element PSYCH VISIT- DIAGNOSTIC EVALUATION less than or equal to 300 days ends after end of Occurrence A of Medication Dispensed QDM data element

ADHD MEDICATIONS equals Yes, proceed to check Occurrence B of Encounter Performed starting on line 15.

- z. If Occurrence A of QDM data element PSYCH VISIT- DIAGNOSTIC EVALUATION greater than or equal to 31 days ends after end of Occurrence A of Medication Dispensed QDM data element ADHD MEDICATIONS AND if Occurrence A of QDM data element PSYCH VISIT- DIAGNOSTIC EVALUATION less than or equal to 300 days ends after end of Occurrence A of Medication Dispensed QDM data element ADHD MEDICATIONS equals No, proceed to check next Occurrence A of Encounter Performed.
- aa. If Occurrence A of QDM data element PSYCH VISIT- PSYCHOTHERAPY greater than or equal to 31 days ends after end of Occurrence A of Medication Dispensed QDM data element ADHD MEDICATIONS AND if Occurrence A of QDM data element PSYCH VISIT- PSYCHOTHERAPY less than or equal to 300 days ends after end of Occurrence A of Medication Dispensed QDM data element ADHD MEDICATIONS equals Yes, proceed to check Occurrence B of Encounter Performed starting on line 14.
- bb. If Occurrence A of QDM data element PSYCH VISIT- PSYCHOTHERAPY greater than or equal to 31 days ends after end of Occurrence A of Medication Dispensed QDM data element ADHD MEDICATIONS AND if Occurrence A of QDM data element PSYCH VISIT- PSYCHOTHERAPY less than or equal to 300 days ends after end of Occurrence A of Medication Dispensed QDM data element ADHD MEDICATIONS equals No, include in the No/missing Numerator Data Submitted count and stop processing.

15. Check Occurrence B of Encounter Performed or Occurrence A of Telehealth Services or Telephone Management:

- a. If Occurrence B of QDM data element OFFICE VISIT greater than or equal to 31 days ends after end of Medication Dispensed Occurrence A of QDM data element ADHD MEDICATIONS AND if Occurrence B of QDM data element OFFICE VISIT less than or equal to 300 days ends after end of Occurrence A of Medication Dispensed QDM data element ADHD MEDICATIONS equals Yes, include in Numerator 2 count. Numerator 2 is represented by letter A in the sample calculation listed at the end of this document. Letter A equals 4 patients in the sample calculation.
- b. If Occurrence B of QDM data element OFFICE VISIT greater than or equal to 31 days ends after end of Occurrence A of Medication Dispensed QDM data element ADHD MEDICATIONS AND if Occurrence B of QDM data element OFFICE VISIT less than or equal to 300 days ends after end of Occurrence A of Medication Dispensed QDM data element ADHD MEDICATIONS equals No, proceed to check next Occurrence B of Encounter Performed.
- c. If Occurrence B of QDM data element HOSPITAL OBSERVATION CARE - INITIAL greater than or equal to 31 days ends after end of Occurrence A of Medication Dispensed QDM data element ADHD MEDICATIONS AND if Occurrence B of QDM data element HOSPITAL OBSERVATION CARE - INITIAL less than or equal to 300 days ends after end of Occurrence A of Medication Dispensed QDM data element ADHD MEDICATIONS equals Yes, include in Numerator 2 count. Numerator 2 is represented by letter A in the sample calculation listed at the end of this document. Letter A equals 4 patients in the sample calculation.

- d. If Occurrence B of QDM data element HOSPITAL OBSERVATION CARE - INITIAL greater than or equal to 31 days ends after end of Occurrence A of Medication Dispensed QDM data element ADHD MEDICATIONS AND if Occurrence B of QDM data element HOSPITAL OBSERVATION CARE - INITIAL less than or equal to 300 days ends after end of Occurrence A of Medication Dispensed QDM data element ADHD MEDICATIONS equals No, proceed to check next Occurrence B of Encounter Performed.
- e. If Occurrence B of QDM data element PREVENTIVE CARE- INITIAL OFFICE VISIT, 0 TO 17 greater than or equal to 31 days ends after end of Occurrence A of Medication Dispensed QDM data element ADHD MEDICATIONS AND if Occurrence B of QDM data element PREVENTIVE CARE- INITIAL OFFICE VISIT, 0 TO 17 less than or equal to 300 days ends after end of Occurrence A of Medication Dispensed QDM data element ADHD MEDICATIONS equals Yes, include in Numerator 2 count. Numerator 2 is represented by letter A in the sample calculation listed at the end of this document. Letter A equals 4 patients in the sample calculation.
- f. If Occurrence B of QDM data element PREVENTIVE CARE- INITIAL OFFICE VISIT, 0 TO 17 greater than or equal to 31 days ends after end of Occurrence A of Medication Dispensed QDM data element ADHD MEDICATIONS AND if Occurrence B of QDM data element PREVENTIVE CARE- INITIAL OFFICE VISIT, 0 TO 17 less than or equal to 300 days ends after end of Occurrence A of Medication Dispensed QDM data element ADHD MEDICATIONS equals No, proceed to check next Occurrence B of Encounter Performed.
- g. If Occurrence B of QDM data element PREVENTIVE CARE - ESTABLISHED OFFICE VISIT, 0 TO 17 greater than or equal to 31 days ends after end of Occurrence A of Medication Dispensed QDM data element ADHD MEDICATIONS AND if Occurrence B of QDM data element PREVENTIVE CARE - ESTABLISHED OFFICE VISIT, 0 TO 17 less than or equal to 300 days ends after end of Occurrence A of Medication Dispensed QDM data element ADHD MEDICATIONS equals Yes, include in Numerator 2 count. Numerator 2 is represented by letter A in the sample calculation listed at the end of this document. Letter A equals 4 patients in the sample calculation.
- h. If Occurrence B of QDM data element PREVENTIVE CARE- ESTABLISHED OFFICE VISIT, 0 TO 17 greater than or equal to 31 days ends after end of Occurrence A of Medication Dispensed Medication Dispensed QDM data element ADHD MEDICATIONS AND if Occurrence B of QDM data element PREVENTIVE CARE- ESTABLISHED OFFICE VISIT, 0 TO 17 less than or equal to 300 days ends after end of Occurrence A of QDM data element ADHD MEDICATIONS equals No, proceed to check next Occurrence B of Encounter Performed.
- i. If Occurrence B of QDM data element PREVENTIVE CARE SERVICES - GROUP COUNSELING greater than or equal to 31 days ends after end of Occurrence A of Medication Dispensed QDM data element ADHD MEDICATIONS AND if Occurrence B of QDM data element PREVENTIVE CARE SERVICES - GROUP COUNSELING less than or equal to 300 days ends after end of Occurrence A of Medication Dispensed QDM data element ADHD MEDICATIONS equals Yes, include in Numerator 2 count. Numerator 2 is represented by letter A in the sample



calculation listed at the end of this document. Letter A equals 4 patients in the sample calculation.

- j. If Occurrence B of QDM data element PREVENTIVE CARE SERVICES - GROUP COUNSELING greater than or equal to 31 days ends after end of Occurrence A of Medication Dispensed QDM data element ADHD MEDICATIONS AND if Occurrence B of QDM data element PREVENTIVE CARE SERVICES - GROUP COUNSELING less than or equal to 300 days ends after end of Occurrence A of Medication Dispensed QDM data element ADHD MEDICATIONS equals No, proceed to check next Occurrence B of Encounter Performed.
- k. If Occurrence B of QDM data element BEHAVIORAL HEALTH FOLLOW-UP VISIT greater than or equal to 31 days ends after end of Occurrence A of Medication Dispensed QDM data element ADHD MEDICATIONS AND if Occurrence B of QDM data element BEHAVIORAL HEALTH FOLLOW-UP VISIT less than or equal to 300 days ends after end of Occurrence A of Medication Dispensed QDM data element ADHD MEDICATIONS equals Yes, include in Numerator 2 count. Numerator 2 is represented by letter A in the sample calculation listed at the end of this document. Letter A equals 4 patients in the sample calculation.
- l. If Occurrence B of QDM data element BEHAVIORAL HEALTH FOLLOW-UP VISIT greater than or equal to 31 days ends after end of Occurrence A of Medication Dispensed QDM data element ADHD MEDICATIONS AND if Occurrence B of QDM data element BEHAVIORAL HEALTH FOLLOW-UP VISIT less than or equal to 300 days ends after end of Occurrence A of Medication Dispensed QDM data element ADHD MEDICATIONS equals No, proceed to check next Occurrence B of Encounter Performed.
- m. If Occurrence B of QDM data element PREVENTIVE CARE SERVICES-INDIVIDUAL COUNSELING greater than or equal to 31 days ends after end of Occurrence A of Medication Dispensed QDM data element ADHD MEDICATIONS AND if Occurrence B of QDM data element PREVENTIVE CARE SERVICES-INDIVIDUAL COUNSELING less than or equal to 300 days ends after end of Occurrence A of Medication Dispensed QDM data element ADHD MEDICATIONS equals Yes, include in Numerator 2 count. Numerator 2 is represented by letter A in the sample calculation listed at the end of this document. Letter A equals 4 patients in the sample calculation.
- n. If Occurrence B of QDM data element PREVENTIVE CARE SERVICES-INDIVIDUAL COUNSELING greater than or equal to 31 days ends after end of Occurrence A of Medication Dispensed QDM data element ADHD MEDICATIONS AND if Occurrence B of QDM data element PREVENTIVE CARE SERVICES-INDIVIDUAL COUNSELING less than or equal to 300 days ends after end of Occurrence A of Medication Dispensed QDM data element ADHD MEDICATIONS equals No, proceed to check next Occurrence B of Encounter Performed.
- o. If Occurrence B of QDM data element PSYCHOTHERAPY AND PHARMACOLOGIC MANAGEMENT greater than or equal to 31 days ends after end of Occurrence A of Medication Dispensed QDM data element ADHD MEDICATIONS AND if Occurrence B of QDM data element PSYCHOTHERAPY AND PHARMACOLOGIC MANAGEMENT less than or equal to 300 days ends after end of Occurrence A of Medication Dispensed QDM data element ADHD MEDICATIONS equals Yes, include in Numerator 2 count. Numerator 2 is

represented by letter A in the sample calculation listed at the end of this document. Letter A equals 4 patients in the sample calculation.

- p. If Occurrence B of QDM data element PSYCHOTHERAPY AND PHARMACOLOGIC MANAGEMENT greater than or equal to 31 days ends after end of Occurrence A of Medication Dispensed QDM data element ADHD MEDICATIONS AND if Occurrence B of QDM data element PSYCHOTHERAPY AND PHARMACOLOGIC MANAGEMENT less than or equal to 300 days ends after end of Occurrence A of QDM data element Medication Dispensed ADHD MEDICATIONS equals No, proceed to check next Occurrence B of Encounter Performed.
- q. If Occurrence A of QDM data element TELEHEALTH SERVICES greater than or equal to 31 days ends after end of Occurrence A of Medication Dispensed QDM data element ADHD MEDICATIONS AND if Occurrence A of QDM data element TELEHEALTH SERVICES less than or equal to 300 days ends after end of Occurrence A of Medication Dispensed QDM data element ADHD MEDICATIONS equals Yes, include in Numerator 2 count. Numerator 2 is represented by letter A in the sample calculation listed at the end of this document. Letter A equals 4 patients in the sample calculation.
- r. If Occurrence A of QDM data element TELEHEALTH SERVICES greater than or equal to 31 days ends after end of Occurrence A of Medication Dispensed QDM data element ADHD MEDICATIONS AND if Occurrence A of QDM data element TELEHEALTH SERVICES less than or equal to 300 days ends after end of Occurrence A of Medication Dispensed QDM data element ADHD MEDICATIONS equals No, proceed to check next Occurrence B of Encounter Performed.
- s. If Occurrence A of QDM data element TELEPHONE MANAGEMENT greater than or equal to 31 days ends after end of Occurrence A of Medication Dispensed QDM data element ADHD MEDICATIONS AND if Occurrence A of QDM data element TELEPHONE MANAGEMENT less than or equal to 300 days ends after end of Occurrence A of Medication Dispensed QDM data element ADHD MEDICATIONS equals Yes, include in Numerator 2 count. Numerator 2 is represented by letter A in the sample calculation listed at the end of this document. Letter A equals 4 patients in the sample calculation.
- t. If Occurrence A of QDM data element TELEPHONE MANAGEMENT greater than or equal to 31 days ends after end of Occurrence A of Medication Dispensed QDM data element ADHD MEDICATIONS AND if Occurrence A of QDM data element TELEPHONE MANAGEMENT less than or equal to 300 days ends after end of Occurrence A of Medication Dispensed QDM data element ADHD MEDICATIONS equals No, proceed to check next Occurrence B of Encounter Performed.
- u. If Occurrence B of QDM data element FACE-TO-FACE INTERACTION greater than or equal to 31 days ends after end of Occurrence A of Medication Dispensed QDM data element ADHD MEDICATIONS AND if Occurrence B of QDM data element FACE-TO-FACE INTERACTION less than or equal to 300 days ends after end of Occurrence A of Medication Dispensed QDM data element ADHD MEDICATIONS equals Yes, include in Numerator 2 count. Numerator 2 is represented by letter A in the sample calculation listed at the end of this document. Letter A equals 4 patients in the sample calculation.

- v. If Occurrence B of QDM data element FACE-TO-FACE INTERACTION greater than or equal to 31 days ends after end of Occurrence A of Medication Dispensed QDM data element ADHD MEDICATIONS AND if Occurrence B of QDM data element FACE-TO-FACE INTERACTION less than or equal to 300 days ends after end of Occurrence A of Medication Dispensed QDM data element ADHD MEDICATIONS equals No, proceed to check next Occurrence B of Encounter Performed.
- w. If Occurrence B of QDM data element DISCHARGE SERVICES- OBSERVATION CARE greater than or equal to 31 days ends after end of Occurrence A of Medication Dispensed QDM data element ADHD MEDICATIONS AND if Occurrence B of QDM data element DISCHARGE SERVICES- OBSERVATION CARE less than or equal to 300 days ends after end of Occurrence A of Medication Dispensed QDM data element ADHD MEDICATIONS equals Yes, include in Numerator 2 count. Numerator 2 is represented by letter A in the sample calculation listed at the end of this document. Letter A equals 4 patients in the sample calculation.
- x. If Occurrence B of QDM data element DISCHARGE SERVICES- OBSERVATION CARE greater than or equal to 31 days ends after end of Occurrence A of Medication Dispensed QDM data element ADHD MEDICATIONS AND if Occurrence B of QDM data element DISCHARGE SERVICES- OBSERVATION CARE less than or equal to 300 days ends after end of Occurrence A of Medication Dispensed QDM data element ADHD MEDICATIONS equals No, proceed to check next Occurrence B of Encounter Performed.
- y. If Occurrence B of QDM data element OUTPATIENT CONSULTATION greater than or equal to 31 days ends after end of Occurrence A of Medication Dispensed QDM data element ADHD MEDICATIONS AND if Occurrence B of QDM data element OUTPATIENT CONSULTATION less than or equal to 300 days ends after end of Occurrence A of Medication Dispensed QDM data element ADHD MEDICATIONS equals Yes, include in Numerator 2 count. Numerator 2 is represented by letter A in the sample calculation listed at the end of this document. Letter A equals 4 patients in the sample calculation.
- z. If Occurrence B of QDM data element OUTPATIENT CONSULTATION greater than or equal to 31 days ends after end of Occurrence A of Medication Dispensed QDM data element ADHD MEDICATIONS AND if Occurrence B of QDM data element OUTPATIENT CONSULTATION less than or equal to 300 days ends after end of Occurrence A of Medication Dispensed QDM data element ADHD MEDICATIONS equals No, proceed to check next Occurrence B of Encounter Performed.
- aa. If Occurrence B of QDM data element HOME HEALTHCARE SERVICES greater than or equal to 31 days ends after end of Occurrence A of Medication Dispensed QDM data element ADHD MEDICATIONS AND if Occurrence B of QDM data element HOME HEALTHCARE SERVICES less than or equal to 300 days ends after end of Occurrence A of Medication Dispensed QDM data element ADHD MEDICATIONS equals Yes, include in Numerator 2 count. Numerator 2 is represented by letter A in the sample calculation listed at the end of this document. Letter A equals 4 patients in the sample calculation.

- bb. If Occurrence B of QDM data element HOME HEALTHCARE SERVICES greater than or equal to 31 days ends after end of Occurrence A of Medication Dispensed QDM data element ADHD MEDICATIONS AND if Occurrence B of QDM data element HOME HEALTHCARE SERVICES less than or equal to 300 days ends after end of Occurrence A of Medication Dispensed QDM data element ADHD MEDICATIONS equals No, proceed to check next Occurrence B of Encounter Performed.
- cc. If Occurrence B of QDM data element PSYCH VISIT – DIAGNOSTIC EVALUATION greater than or equal to 31 days ends after end of Occurrence A of Medication Dispensed QDM data element ADHD MEDICATIONS AND if Occurrence B of QDM data element PSYCH VISIT – DIAGNOSTIC EVALUATION less than or equal to 300 days ends after end of Occurrence A of Medication Dispensed QDM data element ADHD MEDICATIONS equals Yes, include in Numerator 2 count. Numerator 2 is represented by letter A in the sample calculation listed at the end of this document. Letter A equals 4 patients in the sample calculation.
- dd. If Occurrence B of QDM data element PSYCH VISIT – DIAGNOSTIC EVALUATION greater than or equal to 31 days ends after end of Occurrence A of Medication Dispensed QDM data element ADHD MEDICATIONS AND if Occurrence B of QDM data element PSYCH VISIT – DIAGNOSTIC EVALUATION less than or equal to 300 days ends after end of Occurrence A of Medication Dispensed QDM data element ADHD MEDICATIONS equals No, proceed to check next Occurrence B of Encounter Performed.
- ee. If Occurrence B of QDM data element PSYCH VISIT – PSYCHOTHERAPY greater than or equal to 31 days ends after end of Occurrence A of Medication Dispensed QDM data element ADHD MEDICATIONS AND if Occurrence B of QDM data element PSYCH VISIT – PSYCHOTHERAPY less than or equal to 300 days ends after end of Occurrence A of Medication Dispensed QDM data element ADHD MEDICATIONS equals Yes, include in Numerator 2 count. Numerator 2 is represented by letter A in the sample calculation listed at the end of this document. Letter A equals 4 patients in the sample calculation.
- ff. If Occurrence B of QDM data element PSYCH VISIT – PSYCHOTHERAPY greater than or equal to 31 days ends after end of Occurrence A of Medication Dispensed QDM data element ADHD MEDICATIONS AND if Occurrence B of QDM data element PSYCH VISIT – PSYCHOTHERAPY less than or equal to 300 days ends after end of Occurrence A of Medication Dispensed QDM data element ADHD MEDICATIONS equals No, include in the No/missing Numerator Data Submitted count and stop processing.

**SAMPLE CALCULATION:** *Combination of Initial Patient Population 2; Denominator 2; Numerator 2*

**Performance Rate =**

Numerator (a=4 patients)

÷

Denominator (b=10 patients) – Denominator Exclusions ( $c^1 + c^2 = 4$  patients) – *Denominator Exceptions (N/A)*

**= 66.67%**